



SIGMA
SWITCHES PLUS

1N SERIES

1Z = 14VDC Indicator Light

FEATURES

- 14V LED Or Bright Incandescent Bulb
- Custom colors & printing available upon request

MOUNTING

No hardware or tools needed. Self locks into proper panel cutout 12.19mm (.480") x 27.23mm (1.072").

Acceptable panel thickness range is from .64mm (0.025") to 4.57mm (0.180").



CAUTION! Burr direction must be away from the direction of insertion

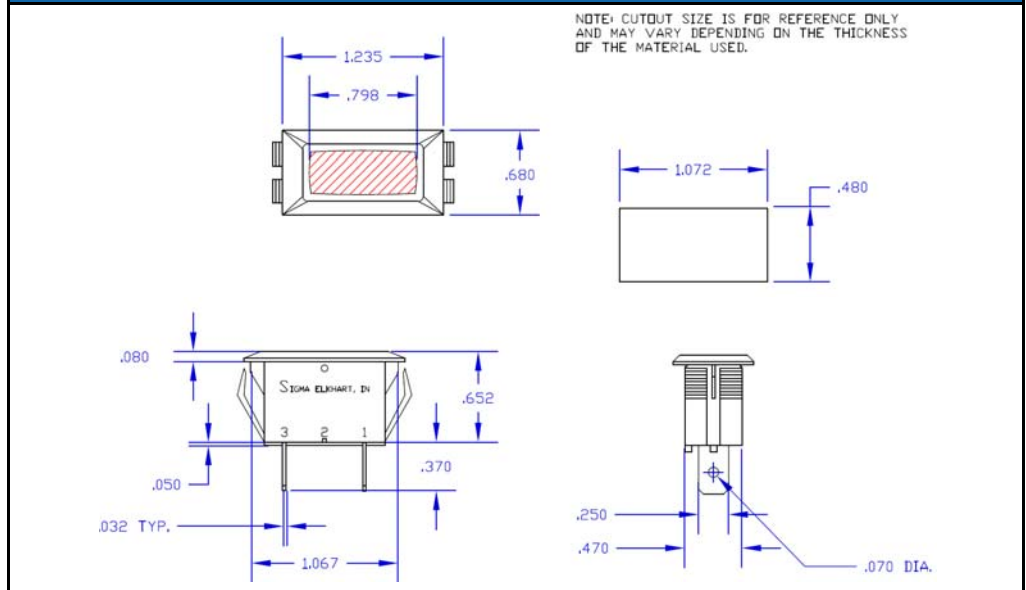
APPROVALS

RoHS compliant

SWITCH SELECTION CHART

Part No.	Description	Special Markings	BLK	WHT	RED	BLU	GRN	AMB	BRN	IVY
1Z-02-N	14V LED		O			O				
1Z-03-N	14V LED		O		O					
1Z-04-N	14V LED		O					O		
1Z-05-N	14V LED		O				O			

1N SERIES (1Z-03-N SHOWN FOR REFERENCE PURPOSE ONLY)



SIGMA
SWITCHES PLUS

4703 Wyland Dr.
Elkhart, IN 46516
PH: 574-294-5776
FX: 574-294-8744

www.sigmaswitches.com

OUR COMMITMENT TO YOU

We are constantly adding-to and improving our selection of Rocker, Toggle, Push Button and other types of switches. If you do not find what you need here, or on other pages of our web site, please do not hesitate to contact us. If your need is custom, we would like to discuss your unique design requirements as well.

Thank you for giving us the opportunity to fulfill Your switching needs!